



The 21st Century Commission

January 12, 2006



Where New York Is Today

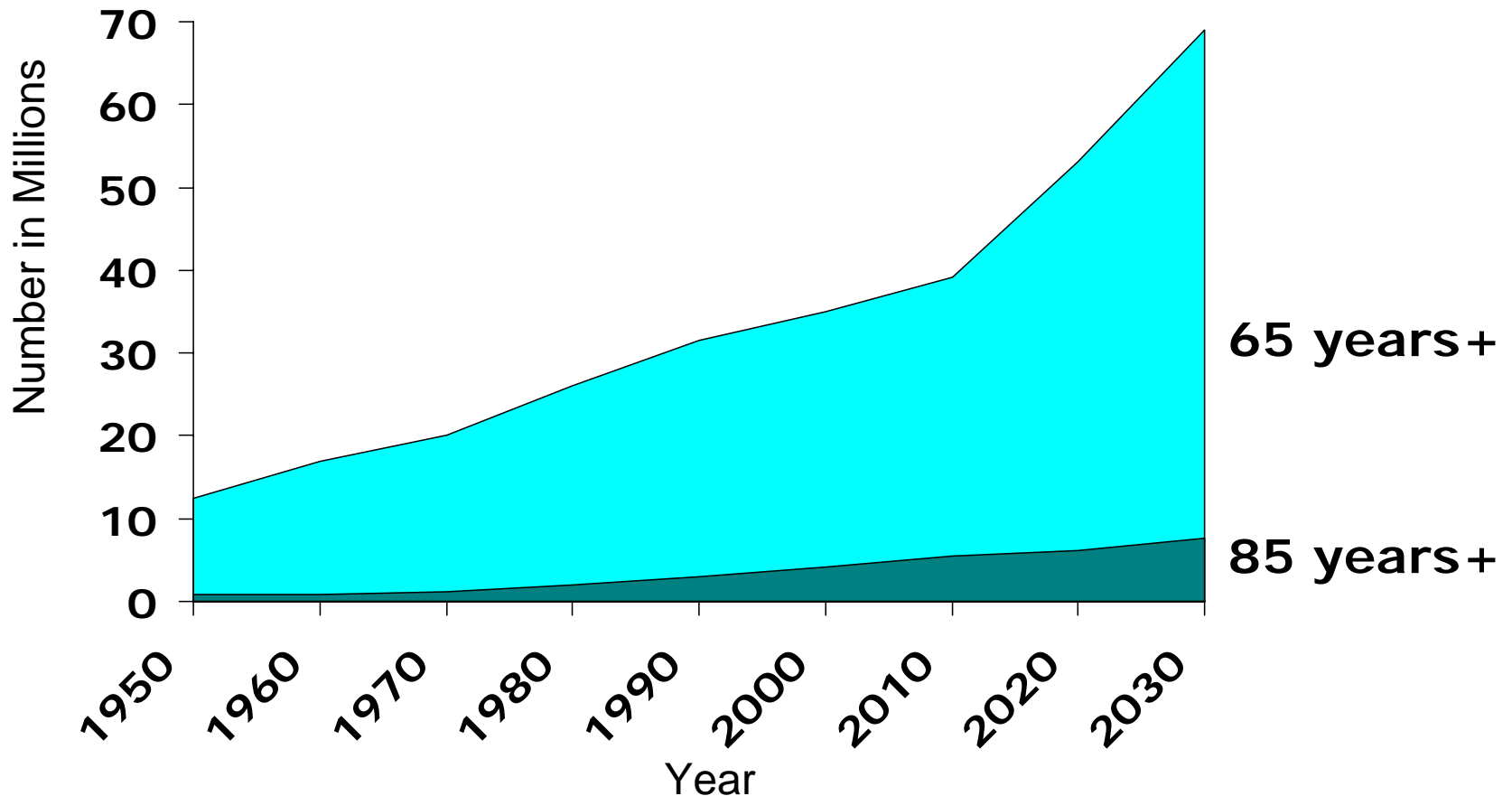
- Medicaid supported programs:
 - Long Term Home Health Care Program
 - Personal care services
 - Certified Home Health Agency services
 - Private duty nursing
 - Traumatic Brain Injury Waiver
 - Managed long term care
 - Program for All Inclusive Care for the Elderly (PACE)

Where New York Is Today

(continued)

- Federal Real Choice Grants
- 2005 Long Term Care Demonstrations
- Non-Medicaid programs:
 - Expanded In-home Services for the Elderly
 - Community Services for the Elderly
 - Home-delivered meals
 - Independent Living programs
- Olmstead

The Graying of America: 65+ Population 1950-2030





New York's Long Term Care Vision

- Accessible, coordinated and person-centered
- Support self-determination and promote personal responsibility
- Provide high quality care and services that meet consumer needs
- Ensure accountability, efficiency and affordability

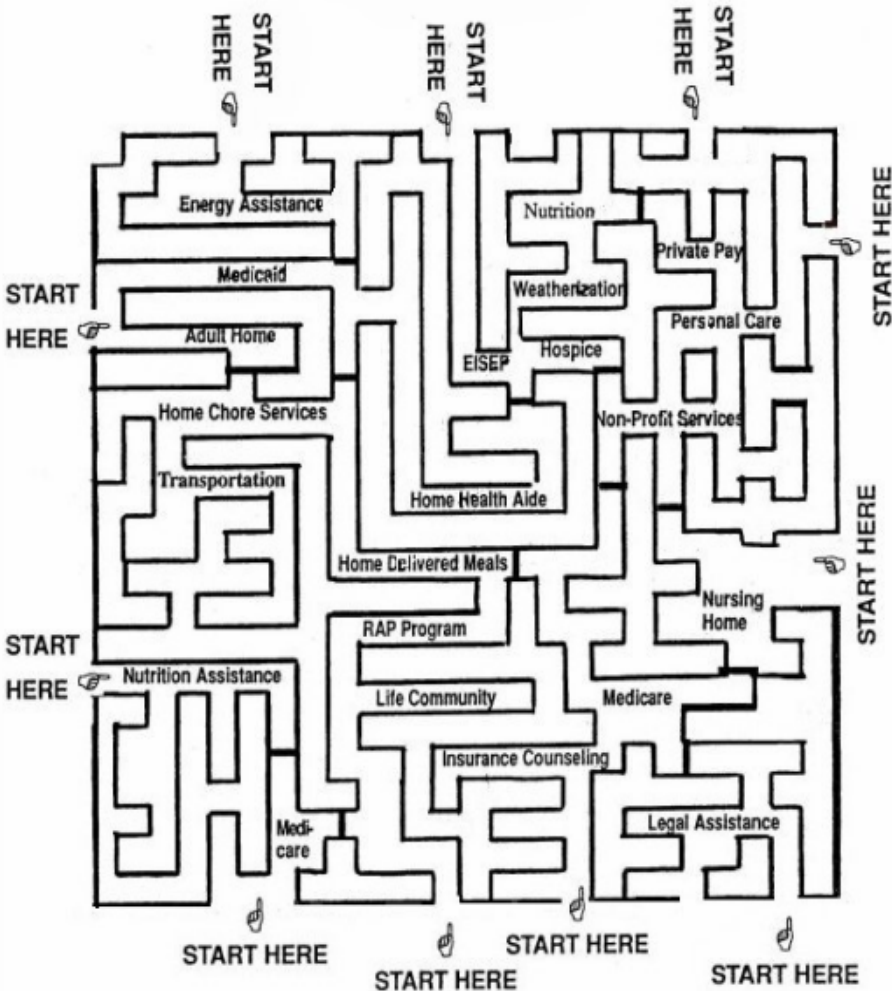


Governor's LTC Work Group Recommendations

- Point of Entry
- MA Waiver: Integrated Approach to LTC System
- Medicaid Eligibility Reform
- Long Term Care Insurance
- Nursing Home Innovation

Local Long Term Care System Current Organizational Structure

Consumers
and
Caregivers





Access to Long Term Care Services Can Be Improved

- HOW?
 - Establish **Point of Entry (POE) System**

Recommendations of Governor Pataki's Health Care Reform Workgroup

- Comprehensive and unbiased information and assistance in all services and supports
- Screening - social and medical needs; financial status; available service options, regardless of payer source
- Comprehensive needs assessment



Recommendations of Governor Pataki's Health Care Reform Workgroup

- Service/care coordination
- Public education
 - Promote planning, promote personal choice
 - Prepare financially
- Interdisciplinary team approach

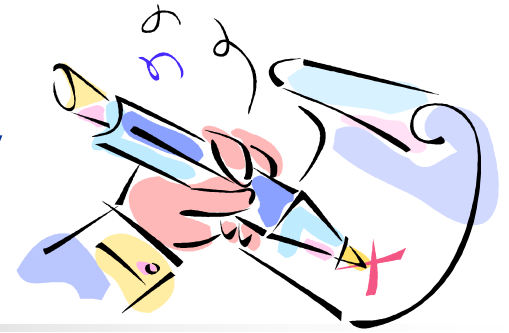




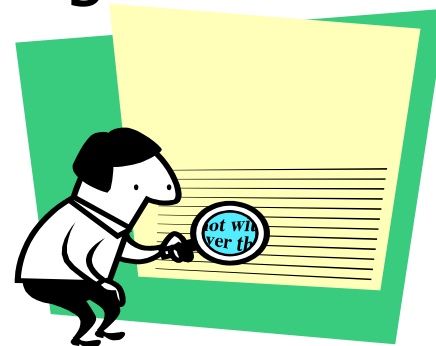
Qualities of NYS POE

- **All**
- Age or disability
- Trusted resource
- Connected with their community
- Place (within the community)
- Consumers, caregivers, professionals
- Reliable, impartial information

Accountability



- Consistent and unbiased program throughout the entire state
 - Contractually obligate local POE
 - Statewide contractor for IT platform
 - Statewide contractor or contractors will provide program monitoring and training of Point of Entry entities



POE Contract

- Local government – right of first refusal
- Not-for-profit
- ? (Other model)





IT Contract

- Information Technology Central
- Web based system
- HIPAA compliant
- Customer access (local & long distance)
 - Data entry
 - Communication
 - Information acquisition, personal education
- Work toward integrated care

MONITORING AND TRAINING CONTRACT

- Monitor performance of qualified responders
- Develop training curricula components



No Change, But Change

- No change: 2 existing assessment requirements will continue:
 - ✓ Those qualifying for publicly financed long term care services;
 - ✓ Consumers seeking nursing home placement, regardless of payer source;
- Change: POE, in Phase II, will assume the assessment functions



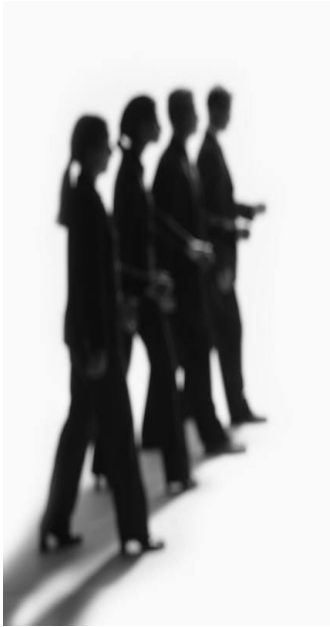
Phase I

- Statewide Roll Out
- Information and Assistance
- Screening (consisting of a preliminary evaluation of the consumer and their caregiver's general social, medical and financial needs to identify available service options and choices)



NYSOFA & DOH

- **Jointly work on:**
 - Standards
 - Requirements
 - Program outcomes
 - Performance measures
- **In preparation for:**
 - RFA for POE Entities
 - RFP for IT
 - RFP for Staff Training
 - RFP for Monitoring, Evaluation, Quality Assurance



Tentative Timeline – Phase I

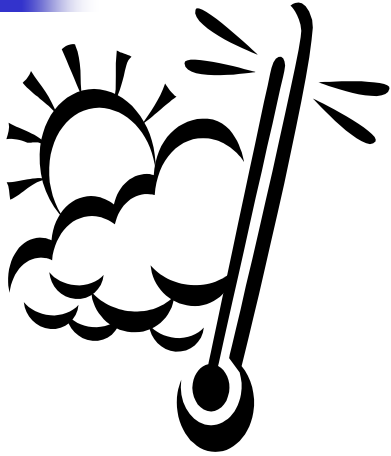


- NYSOFA/DOH develop standards, performance measures for Phase I POE and IT Contracts ([winter/spring '06](#))



- Issue RFA/RFP ([spring '06](#))
- RFA to Counties
- IT Contract
- Develop Training RFP

Tentative Timeline – Phase I



(Summer 2006)

- RFA's reviewed
- If needed, RFP issued in any county "passing"
- Notice of county awards
- Issue training contract

PHASE I

(Fall/Early Winter 2006)

- Implement POE's
- Build IT platform
- Monitoring & evaluation RFP developed





Phase II

- Bring on-line fully functioning POE
 - Comprehensive Needs Assessment
 - Service Coordination
- Simultaneous with Phase I implementation
 - NYSOFA & DOH develop standards, requirements, expected outcome measures

STAKEHOLDER CONCERNS ABOUT POE

- Delays:
 - Completing assessments
 - Establishing eligibility
 - Hospital discharges
 - Nursing home admissions
 - Start of home care services
- Funding and Resources



Improve the Delivery of Services to Long Term Care Consumers



■ Key Issues

- Inequities in the types/levels of services provided
- Medicaid State Plan emphasis on medical model
- Inflexibility for consumers and administrators

■ Recommendations

- An integrated long term care Medicaid program using a single waiver
- **First step: NHTD waiver**

Nursing Home Transition and Diversion Waiver



- RFI issued April 2005
- Applied for CMS waiver in December 2005
- RFI, Summary of responses and CMS waiver application posted on web:

<http://www.health.state.ny.us/>

(Click Health Care Reform Working Group tab)

Nursing Home Transition and Diversion Waiver



- 2004 enacted legislation will increase opportunities for community-based care.
- DOH worked with consumers, providers and local government representatives to design and implement this initiative.
- December 2005 - DOH requested a Federal CMS waiver to provide community-based services not included in the traditional Medicaid program.



Nursing Home Transition Waiver

- Eligible individuals may include those who are:
 - At least 18 years of age;
 - Eligible for or in receipt of Medicaid;
 - In a nursing home/need skilled nursing care;
 - Capable of residing in the community
 - Full range of State Plan Services + Waiver Services
 - Statewide aggregate cost cap—not to exceed the cost of nursing home care



Restructuring Long Term Care in NYS: What we know so far...

- Pursue HCSB 1115 waiver
- Waiver will “fold in” existing DOH waiver programs with Medicaid LTC State Plan services
- Federal funding for non-Medicaid services (e.g. EISEP, Meals on Wheels) for higher income recipients
- Maintain cost neutrality



Restructuring Long Term Care in NYS: What we know so far...

- Eligibility:
 - Persons of all ages
 - Close eligibility loopholes
 - Provide options to increase personal responsibility: Partnership for Long Term Care



Restructuring Long Term Care in NYS: What we know so far...

- Services will include:
 - All Medicaid LTC State Plan services
 - All services included in existing DOH waivers:
 - Care at Home,
 - Long Term Care Home Health Care,
 - TBI, and
 - Nursing Home Transition and Diversion
 - Additional services may be included



Follow Progress on NYSOFA and DOH Websites

- Governor's Health Care Reform Working Group "Interim Report"
- POE RFI and Response Summary
- NHTD RFA and CMS Waiver Application

<http://www.aging.state.ny.us/explore>

<http://www.health.state.ny.us>

(Click Long Term Care and Health Care Reform Working Group Tabs)